

iTOOLS



EUROTHERM
CONTROLS



Instrument tools for Series 2000 controllers

Ideal for:

- **Controller configuration**
- **Cloning controllers**
- **Commissioning**
- **Distributors**
- **Maintenance departments**
- **Assured replacement**

iTools is a Windows® based software package designed to configure communicating 2200, 2400 panel controllers and the 2500 DIN rail controllers. It will operate on any personal computer running Windows®95, 98 or NT. It uses Modbus RTU communications via a serial port.

iTools will scan the network on request, and identify any Series 2000 controller that is connected to the network and has a valid Modbus address. Using Eurotherm's unique 'Remote Interface Protocol' iTools provides a replica of the attached instruments' front panel. This replica can then be used by the operator, using mouse clicks to simulate pressing the buttons. The faceplate provides an exact repeat of the attached instrument, therefore hidden parameters or promoted parameters will remain exactly as they are in the actual controller. The faceplate is an ActiveX™ component which can be used within any ActiveX container application, such as Visual Basic forms.

In addition to the controller faceplate, all the parameters within the controller are available in a separate window. Each parameter list is shown as a folder, and by clicking on it, all the parameters in that list are displayed, together with their current value.

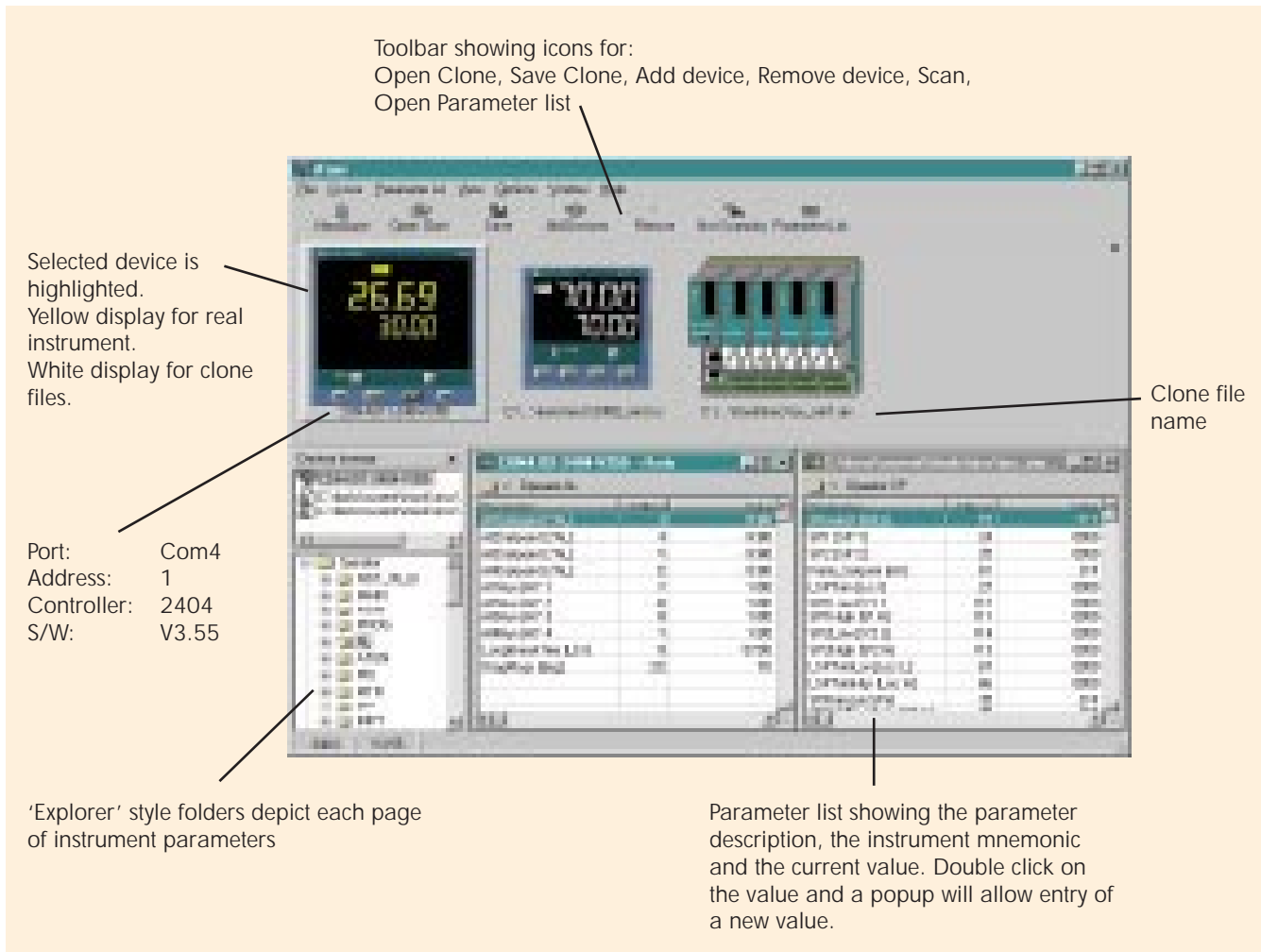
Copying the complete set of parameter values from an attached controller to a file can be done at the click of a button - this file can be 'cloned' onto a new controller to provide a duplicate.

iTools Modbus driver is a server application which will permit iTools themselves, as a client, to run on the same or any networked PC. It can also operate as an OPC™ server, providing data links into other OPC compliant software. Connection can also be made through a remote modem.

Features:

- **Automatic network node identification** Immediate start up
- **Clear parameter displays** Minimises set up errors
Reduces commissioning costs
- **Clone 'save' and 'load'** Quick, assured controller configuration
- **Faceplate operations** Minimises training for operators
- **ActiveX component** Easy to use in Visual Basic
- **Modem/Network support** Enables World-wide service

iTools
Series 2000
instrument tools



iTools will run on a personal computer running Windows®95, 98 or NT. A minimum of 16Mb RAM (24Mb for NT) is recommended and, although a standard VGA (640x480) screen is adequate, larger screens allow more parameters to be displayed at once. About 5Mb of disk space is required and the instruments are normally connected via a serial port.

Ordering Code

ITOOLS	WIN				NONE	ENG
ITOOLS	Software tools for configuring and commissioning S2000					
	WIN	Windows 95, 98 or NT				
		3.5 CD	3.5 in disks CD Rom			
			2200	2200 templates only		
			2400	2400 templates only		
			2500	2500 templates only		
			COMP	All available templates		
			MODBUS	Modbus OPC driver		
			PROFIBUS	Profibus OPC driver		
			STD	Stand alone package		
			STDNW	Networkable package		
				NONE	Options	
					ENG	English manual

Order for 2500 configuration cable: 2500A/CABLE/CONFIG/RJ11/9PINDF/3M0

EUROTHERM CONTROLS LIMITED <http://www.eurotherm.co.uk>

UK SALES OFFICE

Eurotherm Controls Limited
Faraday Close, Durrington
Worthing, West Sussex BN13 3PL
Telephone Sales: (01903) 695888
Technical: (01903) 695777
Service: (01903) 695444
Fax (01903) 695666

Sales and support in over 30 countries worldwide

Eurotherm Controls Limited
Export Dept.,
Faraday Close, Durrington, Worthing
West Sussex, BN13 3PL
Telephone (01903) 268500
Fax (01903) 265982



© Copyright Eurotherm Controls Limited 1998
All rights strictly reserved. No part of this document may be stored in a retrieval system, or any form or by any means without prior written permission from Eurotherm Controls Limited. Every effort has been taken to ensure the accuracy of this specification. However in order to maintain our technological lead we are continuously improving our products which could, without notice, result in amendments or omissions to this specification. We cannot accept responsibility for damage, injury, loss or expenses resulting therefrom.